



### 14 Nymagee Place FISHER ACT

3 1

This three bedroom home is located in a quiet cul-de-sac within easy walking distance of the local; shops, primary and high schools and abundance of playing fields. With entry level buying opportunities being hotly contested in Weston Creek make sure you don't miss out on this gem.

Inside the home has had the living areas opened up with the removal of a few walls allowing the natural light from the northerly aspect to fill the home. The updated kitchen has a large pantry cupboard, gas hot plates, modern oven, dishwasher and instant gas hot water. The living areas flow from inside to the large covered deck to the rear of the home that overlooks the secure backyard. The single metal garage has been converted to a lined studio room and a

**Type** : House  
**Land Size** : 669 sqm  
**View** : <https://www.bertramellis.com.au/5392778>



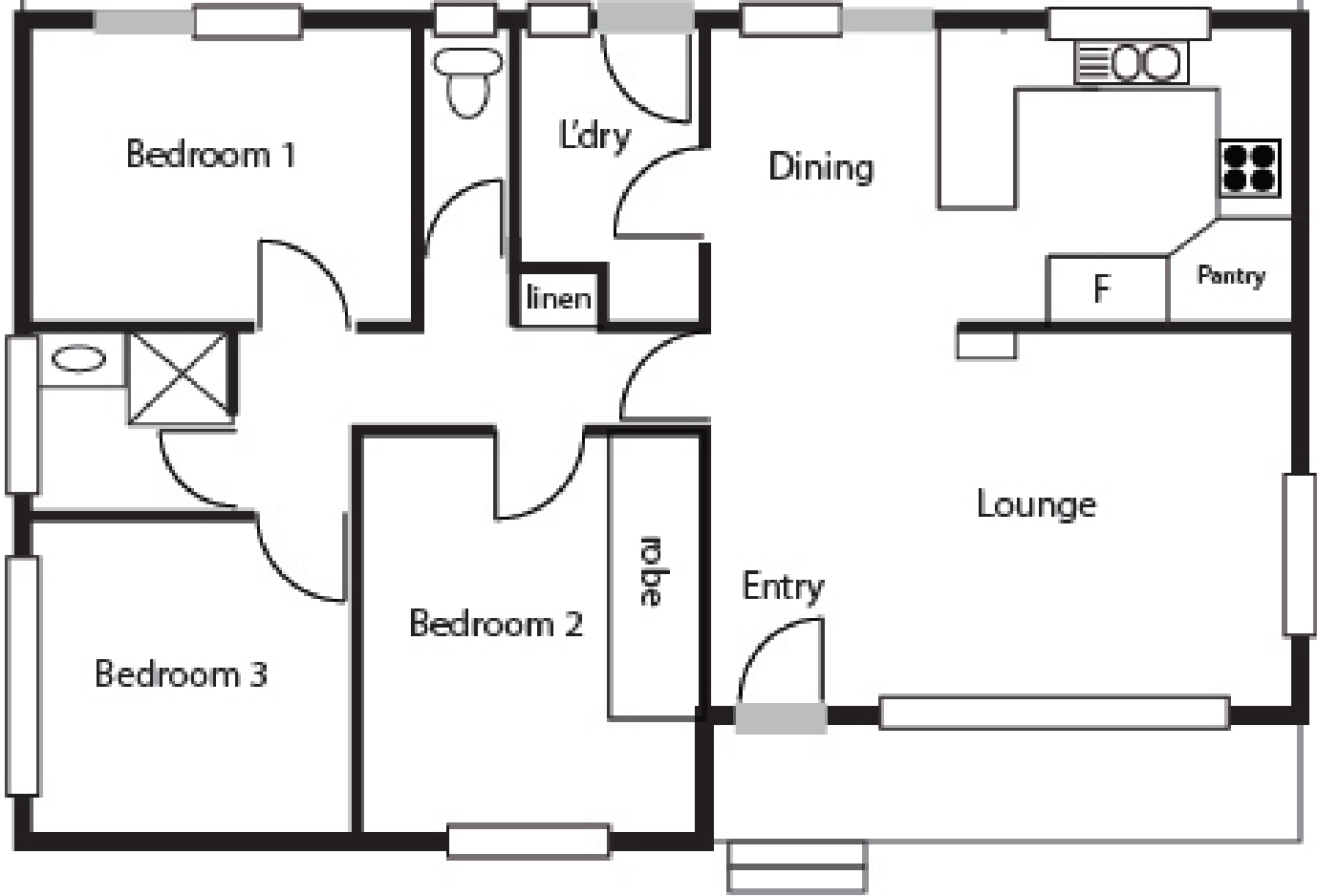
**Tom Ellis**  
6288 6277



**Ashleigh Curtis**  
6288 6277

[For full version visit the website](https://www.bertramellis.com.au)

Covered Rear Deck



Bedroom 1

L'dry

Dining

linen

Pantry

F

Lounge

robe

Entry

Bedroom 2

Bedroom 3